

Rocglen Coal Mine- Monthly Monitoring Summary

Site Information

EPL No: 12870

EPA Website Link: <http://epa.nsw.gov.au/prpoeoapp/ViewPOEOLicence.aspx?DOCID=40278&SYSUID=1&LICID=12870>

Licensee: Whitehaven Coal Mining Pty Ltd

Licensee Address: Rocglen Coal Mine, Wean Road, GUNNEDAH NSW 2380

EPL Monitoring Points: See Figure 1 below

Sampling Period: January 2024

Obtained Date: 21st February 2024

Publication Date: 22nd February 2024

Table 1 - No Pollutant Limits Apply

EPL ID	Pollutant	Units of Measure	Monitoring Frequency	No. of Samples for the Month	Date(s) Sampled	Date(s) Obtained	Min Value	Mean Value	Median Value	Max or Only Value
4	Particulates-Deposited Matter (BD4)	g/m ² /month	Continuous	1	12/01/2024	30/01/2024	-	-	-	1.6
6	Particulates-Deposited Matter (BD6)	g/m ² /month	Continuous	1	12/01/2024	30/01/2024	-	-	-	1.0
10	PM ₁₀	µg/m ³	Every 6 days	5	6/01/2024 12/01/2024 18/01/2024 24/01/2024 30/01/2024	21/02/2024	3.4	7	5.7	11.1
11	Conductivity	µS /cm	Special Frequency 1*	0	-	-	-	-	-	-
	Total organic carbon	mg/L					-	-	-	-
12	Conductivity	µS /cm	Special Frequency 1*	0	-	-	-	-	-	-
	Total organic carbon	mg/L					-	-	-	-
13	TSS	mg/L	Special Frequency 2**(DDCK)	0	-	-	-	-	-	-
	Conductivity	µS/cm					-	-	-	-
	Oil & Grease	mg/L					-	-	-	-
	pH	pH					-	-	-	-



Rocglen Coal Mine- Monthly Monitoring Summary

EPL ID	Pollutant	Units of Measure	Monitoring Frequency	No. of Samples for the Month	Date(s) Sampled	Date(s) Obtained	Min Value	Mean Value	Median Value	Max or Only Value
	Total organic carbon	mg/L					-	-	-	-
14	TSS	mg/L	Special Frequency 2**(UNDC)	0	-	-	-	-	-	-
	Conductivity	µS/cm					-	-	-	-
	Oil & Grease	mg/L					-	-	-	-
	pH	pH					-	-	-	-
	Total organic carbon	mg/L					-	-	-	-
15	TSS	mg/L	Special Frequency 2** (SD7)	0	-	-	-	-	-	-
	Conductivity	µS /cm					-	-	-	-
	Oil & Grease	mg/L					-	-	-	-
	pH	pH					-	-	-	-
	Total organic carbon	mg/L					-	-	-	-

Table 2 - Pollutant Limits Apply

EPL ID	Pollutant	Units of Measure	Monitoring Frequency	No. of Samples for the Month	Date(s) Sampled	Date(s) Obtained	Min Value	Max or Only Value	100%ile Limit	Exceedance (Yes/No)	Comments
11	TSS	mg/L	Special Frequency 1*	0	-	-	-	-	-	No	-
	Oil & Grease	mg/L					-	-	-	No	
	pH	pH					-	-	-	No	
12	TSS	mg/L	Special Frequency 1*	0	-	-	-	-	-	No	-
	Oil & Grease	mg/L					-	-	-	No	
	pH	pH					-	-	-	No	

* Special Frequency 1 means the collection of samples as soon as practicable after each discharge commences and in any case not more than 12 hours after each discharge commences.

** Special Frequency 2 means collection of samples quarterly (in the event of flow during the quarter) at a time when there is flow and as soon as practicable after each wet weather discharge from points 11 and 12 commences and in any case not more than 12 hours after each discharge commences.



Rocglen Coal Mine- Monthly Monitoring Summary

Table 3 – Monitoring (Quarterly & Yearly – No Limits apply)

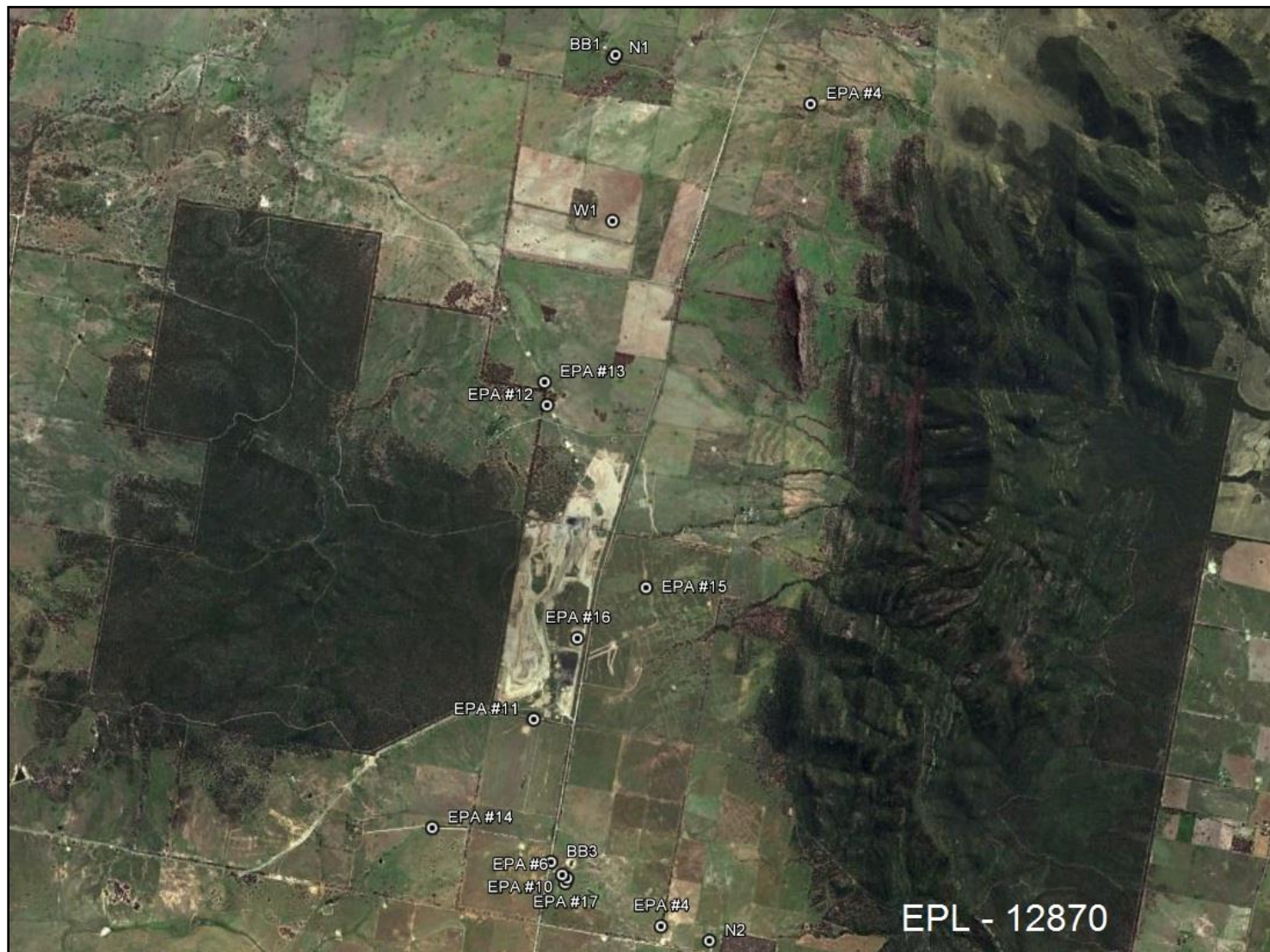
EPL ID	Pollutant	Units of Measure	Monitoring Frequency	No. of Samples for the Month	Date Sampled	Date Obtained	Min Value	Mean Value	Median Value	Max Value/Only Value
16	Aluminium	mg/L	Yearly	0	-	-	-	-	-	-
	Arsenic	mg/L					-	-	-	-
	Bicarbonate	mg/L					-	-	-	-
	Chloride	mg/L					-	-	-	-
	Iron	mg/L					-	-	-	-
	Manganese	mg/L					-	-	-	-
	Sodium	mg/L					-	-	-	-
16	Conductivity	µS/cm	Quarterly	0	-	-	-	-	-	-
	Oil & Grease	mg/L					-	-	-	-
	pH	pH					-	-	-	-
	TOC	mg/L					-	-	-	-
	TSS	mg/L					-	-	-	-



WHITEHAVEN COAL

Rocglen Coal Mine- Monthly Monitoring Summary

Figure 1 – EPL 12870 Monitoring Locations



Rocglen Coal Mine- Monthly Monitoring Summary

Site Information

EPL No: 12870

EPA Website Link: <http://epa.nsw.gov.au/prpoeoapp/ViewPOEOLicence.aspx?DOCID=40278&SYSUID=1&LICID=12870>

Licensee: Whitehaven Coal Mining Pty Ltd

Licensee Address: Rocglen Coal Mine, Wean Road, GUNNEDAH NSW 2380

EPL Monitoring Points: See Figure 1 below

Sampling Period: February 2024

Obtained Date: 17th March 2024

Publication Date: 27th March 2024

Table 1 - No Pollutant Limits Apply

EPL ID	Pollutant	Units of Measure	Monitoring Frequency	No. of Samples for the Month	Date(s) Sampled	Date(s) Obtained	Min Value	Mean Value	Median Value	Max or Only Value
4	Particulates-Deposited Matter (BD4)	g/m ² /month	Continuous	1	12/02/2024	17/03/2024	-	-	-	1.6
6	Particulates-Deposited Matter (BD6)	g/m ² /month	Continuous	1	12/02/2024	17/03/2024	-	-	-	1.0
10	PM ₁₀	µg/m ³	Every 6 days	5	5/02/2024 11/02/2024 17/02/2024 23/02/2024 29/02/2024	11/04/2024	3.6	7.5	6.3	13.1
11	Conductivity	µS /cm	Special Frequency 1*	0	-	-	-	-	-	-
	Total organic carbon	mg/L					-	-	-	-
12	Conductivity	µS /cm	Special Frequency 1*	0	-	-	-	-	-	-
	Total organic carbon	mg/L					-	-	-	-
13	TSS	mg/L	Special Frequency 2**(DDCK)	0	-	-	-	-	-	-
	Conductivity	µS/cm					-	-	-	-
	Oil & Grease	mg/L					-	-	-	-



Rocglen Coal Mine- Monthly Monitoring Summary

EPL ID	Pollutant	Units of Measure	Monitoring Frequency	No. of Samples for the Month	Date(s) Sampled	Date(s) Obtained	Min Value	Mean Value	Median Value	Max or Only Value
	pH	pH					-	-	-	-
	Total organic carbon	mg/L					-	-	-	-
14	TSS	mg/L	Special Frequency 2**(UNDC)	0	-	-	-	-	-	-
	Conductivity	µS/cm					-	-	-	-
	Oil & Grease	mg/L					-	-	-	-
	pH	pH					-	-	-	-
	Total organic carbon	mg/L					-	-	-	-
15	TSS	mg/L	Special Frequency 2** (SD7)	0	-	-	-	-	-	-
	Conductivity	µS /cm					-	-	-	-
	Oil & Grease	mg/L					-	-	-	-
	pH	pH					-	-	-	-
	Total organic carbon	mg/L					-	-	-	-

Table 2 - Pollutant Limits Apply

EPL ID	Pollutant	Units of Measure	Monitoring Frequency	No. of Samples for the Month	Date(s) Sampled	Date(s) Obtained	Min Value	Max or Only Value	100%ile Limit	Exceedance (Yes/No)	Comments
11	TSS	mg/L	Special Frequency 1*	0	-	-	-	-	-	No	-
	Oil & Grease	mg/L					-	-	-	No	
	pH	pH					-	-	-	No	
12	TSS	mg/L	Special Frequency 1*	0	-	-	-	-	-	No	-
	Oil & Grease	mg/L					-	-	-	No	
	pH	pH					-	-	-	No	

* Special Frequency 1 means the collection of samples as soon as practicable after each discharge commences and in any case not more than 12 hours after each discharge commences.

Rocglen Coal Mine- Monthly Monitoring Summary

** Special Frequency 2 means collection of samples quarterly (in the event of flow during the quarter) at a time when there is flow and as soon as practicable after each wet weather discharge from points 11 and 12 commences and in any case not more than 12 hours after each discharge commences.

Table 3 – Monitoring (Quarterly & Yearly – No Limits apply)

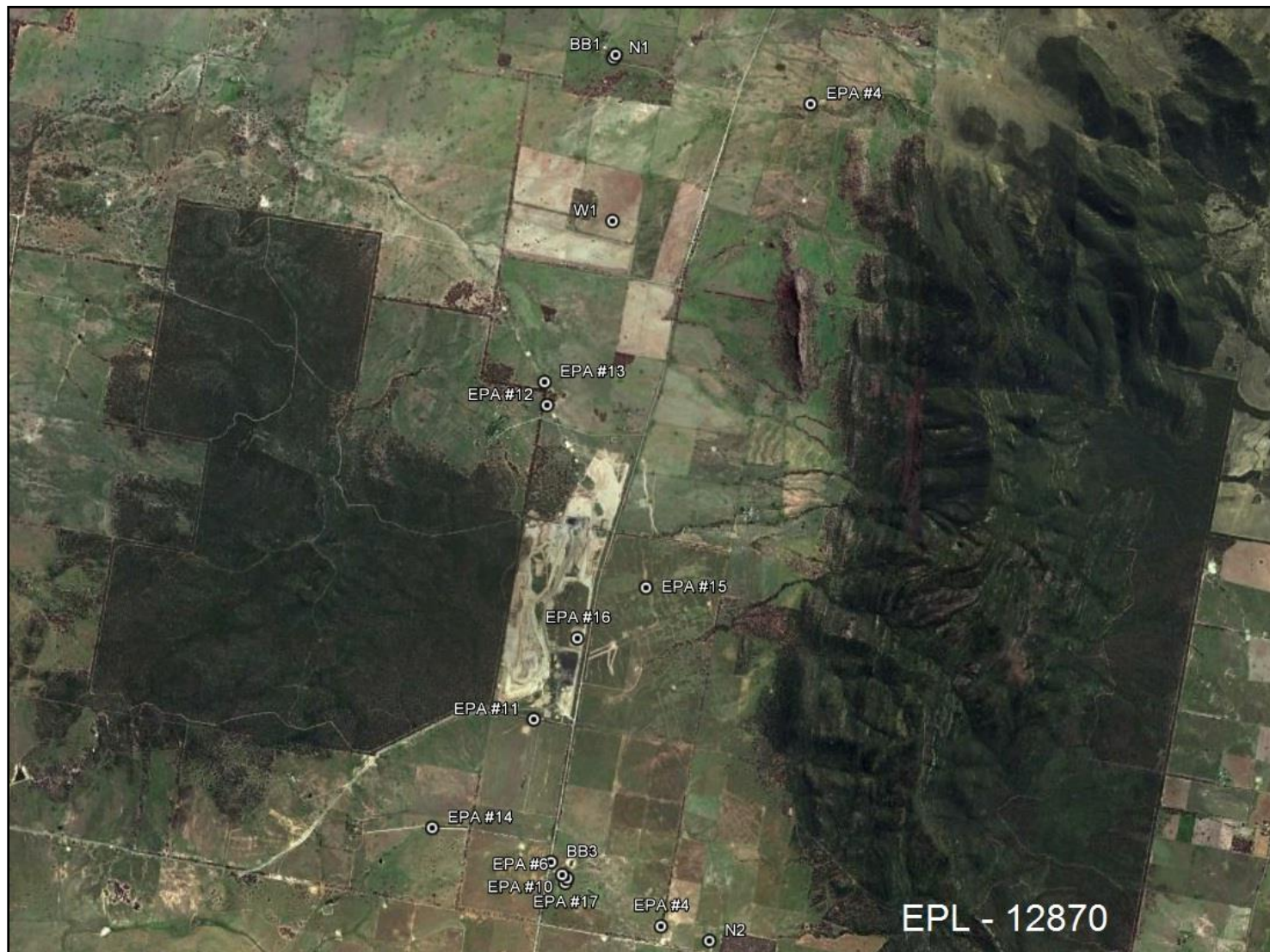
EPL ID	Pollutant	Units of Measure	Monitoring Frequency	No. of Samples for the Month	Date Sampled	Date Obtained	Min Value	Mean Value	Median Value	Max Value/Only Value
16	Aluminium	mg/L	Yearly	0	-	-	-	-	-	-
	Arsenic	mg/L					-	-	-	-
	Bicarbonate	mg/L					-	-	-	-
	Chloride	mg/L					-	-	-	-
	Iron	mg/L					-	-	-	-
	Manganese	mg/L					-	-	-	-
	Sodium	mg/L					-	-	-	-
16	Conductivity	µS/cm	Quarterly	1	15/02/2024	22/02/2024	-	-	-	836
	Oil & Grease	mg/L					-	-	-	<5
	pH	pH					-	-	-	8.92
	TOC	mg/L					-	-	-	5
	TSS	mg/L					-	-	-	91



WHITEHAVEN COAL

Rocglen Coal Mine- Monthly Monitoring Summary

Figure 1 – EPL 12870 Monitoring Locations



Rocglen Coal Mine- Monthly Monitoring Summary

Site Information

EPL No: 12870

EPA Website Link: <http://epa.nsw.gov.au/prpoeoapp/ViewPOEOLicence.aspx?DOCID=40278&SYSUID=1&LICID=12870>

Licensee: Whitehaven Coal Mining Pty Ltd

Licensee Address: Rocglen Coal Mine, Wean Road, GUNNEDAH NSW 2380

EPL Monitoring Points: See Figure 1 below

Sampling Period: March 2024

Obtained Date: 17th April 2024

Publication Date: 18th April 2024

Table 1 - No Pollutant Limits Apply

EPL ID	Pollutant	Units of Measure	Monitoring Frequency	No. of Samples for the Month	Date(s) Sampled	Date(s) Obtained	Min Value	Mean Value	Median Value	Max or Only Value
4	Particulates-Deposited Matter (BD4)	g/m ² /month	Continuous	1	14/03/2024	19/03/2024	-	-	-	1.1
6	Particulates-Deposited Matter (BD6)	g/m ² /month	Continuous	1	14/03/2024	19/03/2024	-	-	-	1.0
10	PM ₁₀	µg/m ³	Every 6 days	5	6/03/2024 12/03/2024 18/03/2024 24/03/2024 30/03/2024	13/04/2024	5.5	8.48	8.2	13.1
11	Conductivity	µS /cm	Special Frequency 1*	0	-	-	-	-	-	-
	Total organic carbon	mg/L					-	-	-	-
12	Conductivity	µS /cm	Special Frequency 1*	0	-	-	-	-	-	-
	Total organic carbon	mg/L					-	-	-	-
13	TSS	mg/L	Special Frequency 2**(DDCK)	0	-	-	-	-	-	-
	Conductivity	µS/cm					-	-	-	-
	Oil & Grease	mg/L					-	-	-	-
	pH	pH					-	-	-	-



Rocglen Coal Mine- Monthly Monitoring Summary

EPL ID	Pollutant	Units of Measure	Monitoring Frequency	No. of Samples for the Month	Date(s) Sampled	Date(s) Obtained	Min Value	Mean Value	Median Value	Max or Only Value
	Total organic carbon	mg/L					-	-	-	-
14	TSS	mg/L	Special Frequency 2**(UNDC)	0	-	-	-	-	-	-
	Conductivity	µS/cm					-	-	-	-
	Oil & Grease	mg/L					-	-	-	-
	pH	pH					-	-	-	-
	Total organic carbon	mg/L					-	-	-	-
15	TSS	mg/L	Special Frequency 2** (SD7)	0	-	-	-	-	-	-
	Conductivity	µS /cm					-	-	-	-
	Oil & Grease	mg/L					-	-	-	-
	pH	pH					-	-	-	-
	Total organic carbon	mg/L					-	-	-	-

Table 2 - Pollutant Limits Apply

EPL ID	Pollutant	Units of Measure	Monitoring Frequency	No. of Samples for the Month	Date(s) Sampled	Date(s) Obtained	Min Value	Max or Only Value	100%ile Limit	Exceedance (Yes/No)	Comments
11	TSS	mg/L	Special Frequency 1*	0	-	-	-	-	-	No	-
	Oil & Grease	mg/L					-	-	-	No	
	pH	pH					-	-	-	No	
12	TSS	mg/L	Special Frequency 1*	0	-	-	-	-	-	No	-
	Oil & Grease	mg/L					-	-	-	No	
	pH	pH					-	-	-	No	

* Special Frequency 1 means the collection of samples as soon as practicable after each discharge commences and in any case not more than 12 hours after each discharge commences.

** Special Frequency 2 means collection of samples quarterly (in the event of flow during the quarter) at a time when there is flow and as soon as practicable after each wet weather discharge from points 11 and 12 commences and in any case not more than 12 hours after each discharge commences.

Rocglen Coal Mine- Monthly Monitoring Summary

Table 3 – Monitoring (Quarterly & Yearly – No Limits apply)

EPL ID	Pollutant	Units of Measure	Monitoring Frequency	No. of Samples for the Month	Date Sampled	Date Obtained	Min Value	Mean Value	Median Value	Max Value/Only Value
16	Aluminium	mg/L	Yearly	0	-	-	-	-	-	-
	Arsenic	mg/L					-	-	-	-
	Bicarbonate	mg/L					-	-	-	-
	Chloride	mg/L					-	-	-	-
	Iron	mg/L					-	-	-	-
	Manganese	mg/L					-	-	-	-
	Sodium	mg/L					-	-	-	-
16	Conductivity	µS/cm	Quarterly	0			-	-	-	-
	Oil & Grease	mg/L					-	-	-	-
	pH	pH					-	-	-	-
	TOC	mg/L					-	-	-	-
	TSS	mg/L					-	-	-	-

Figure 1 – EPL 12870 Monitoring Locations



WHITEHAVEN COAL

Rocglen Coal Mine- Monthly Monitoring Summary



Rocglen Coal Mine- Monthly Monitoring Summary

Site Information

EPL No: 12870

EPA Website Link: <http://epa.nsw.gov.au/prpoeoapp/ViewPOEOLicence.aspx?DOCID=40278&SYSUID=1&LICID=12870>

Licensee: Whitehaven Coal Mining Pty Ltd

Licensee Address: Rocglen Coal Mine, Wean Road, GUNNEDAH NSW 2380

EPL Monitoring Points: See Figure 1 below

Sampling Period: April 2024

Obtained Date: 14th May 2024

Publication Date: 21st May 2024

Table 1 - No Pollutant Limits Apply

EPL ID	Pollutant	Units of Measure	Monitoring Frequency	No. of Samples for the Month	Date(s) Sampled	Date(s) Obtained	Min Value	Mean Value	Median Value	Max or Only Value
4	Particulates-Deposited Matter (BD4)	g/m ² /month	Continuous	1	11/04/2024	22/04/2024	-	-	-	0.5
6	Particulates-Deposited Matter (BD6)	g/m ² /month	Continuous	1	11/04/2024	22/04/2024	-	-	-	0.5
10	PM ₁₀	µg/m ³	Every 6 days	5	8/04/2024 11/04/2024 17/04/2024 23/04/2024 29/04/2024	14/05/2024	3.7	7.22	6.1	12.7
11	Conductivity	µS /cm	Special Frequency 1*	0	-	-	-	-	-	-
	Total organic carbon	mg/L					-	-	-	-
12	Conductivity	µS /cm	Special Frequency 1*	0	-	-	-	-	-	-
	Total organic carbon	mg/L					-	-	-	-
13	TSS	mg/L	Special Frequency 2**(DDCK)	0	-	-	-	-	-	-
	Conductivity	µS/cm					-	-	-	-
	Oil & Grease	mg/L					-	-	-	-
	pH	pH					-	-	-	-



Rocglen Coal Mine- Monthly Monitoring Summary

EPL ID	Pollutant	Units of Measure	Monitoring Frequency	No. of Samples for the Month	Date(s) Sampled	Date(s) Obtained	Min Value	Mean Value	Median Value	Max or Only Value
	Total organic carbon	mg/L					-	-	-	-
14	TSS	mg/L	Special Frequency 2**(UNDC)	0	-	-	-	-	-	-
	Conductivity	µS/cm					-	-	-	-
	Oil & Grease	mg/L					-	-	-	-
	pH	pH					-	-	-	-
	Total organic carbon	mg/L					-	-	-	-
15	TSS	mg/L	Special Frequency 2** (SD7)	0	-	-	-	-	-	-
	Conductivity	µS /cm					-	-	-	-
	Oil & Grease	mg/L					-	-	-	-
	pH	pH					-	-	-	-
	Total organic carbon	mg/L					-	-	-	-

Table 2 - Pollutant Limits Apply

EPL ID	Pollutant	Units of Measure	Monitoring Frequency	No. of Samples for the Month	Date(s) Sampled	Date(s) Obtained	Min Value	Max or Only Value	100%ile Limit	Exceedance (Yes/No)	Comments
11	TSS	mg/L	Special Frequency 1*	0	-	-	-	-	-	No	-
	Oil & Grease	mg/L					-	-	-	No	
	pH	pH					-	-	-	No	
12	TSS	mg/L	Special Frequency 1*	0	-	-	-	-	-	No	-
	Oil & Grease	mg/L					-	-	-	No	
	pH	pH					-	-	-	No	

* Special Frequency 1 means the collection of samples as soon as practicable after each discharge commences and in any case not more than 12 hours after each discharge commences.

** Special Frequency 2 means collection of samples quarterly (in the event of flow during the quarter) at a time when there is flow and as soon as practicable after each wet weather discharge from points 11 and 12 commences and in any case not more than 12 hours after each discharge commences.

Rocglen Coal Mine- Monthly Monitoring Summary

Table 3 – Monitoring (Quarterly & Yearly – No Limits apply)

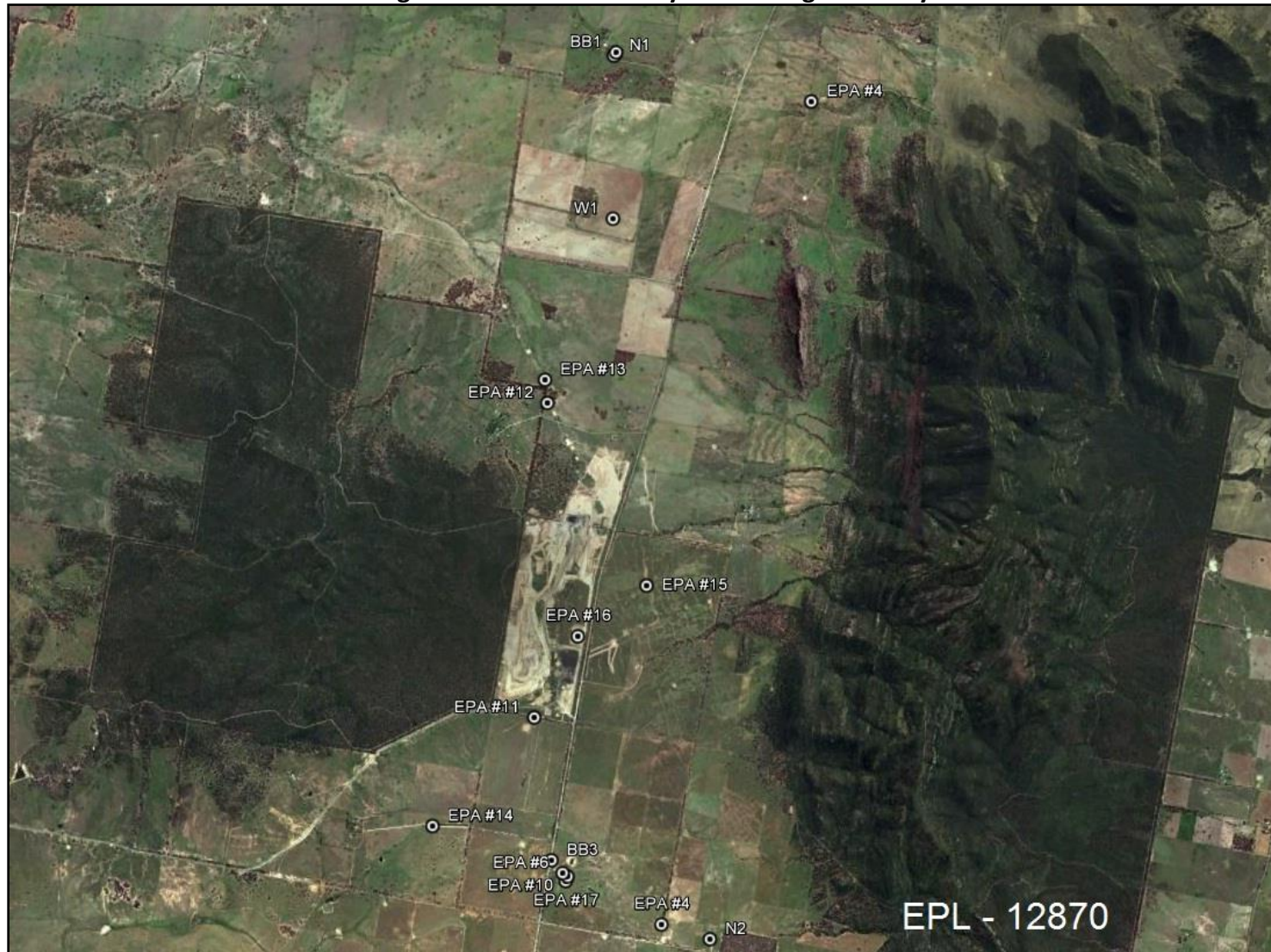
EPL ID	Pollutant	Units of Measure	Monitoring Frequency	No. of Samples for the Month	Date Sampled	Date Obtained	Min Value	Mean Value	Median Value	Max Value/Only Value
16	Aluminium	mg/L	Yearly	0	-	-	-	-	-	-
	Arsenic	mg/L					-	-	-	-
	Bicarbonate	mg/L					-	-	-	-
	Chloride	mg/L					-	-	-	-
	Iron	mg/L					-	-	-	-
	Manganese	mg/L					-	-	-	-
	Sodium	mg/L					-	-	-	-
16	Conductivity	µS/cm	Quarterly	0			-	-	-	-
	Oil & Grease	mg/L					-	-	-	-
	pH	pH					-	-	-	-
	TOC	mg/L					-	-	-	-
	TSS	mg/L					-	-	-	-

Figure 1 – EPL 12870 Monitoring Locations



WHITEHAVEN COAL

Rocglen Coal Mine- Monthly Monitoring Summary





Rocglen Coal Mine- Monthly Monitoring Summary

Site Information

EPL No: 12870

EPA Website Link: <http://epa.nsw.gov.au/prpoeoapp/ViewPOEOLicence.aspx?DOCID=40278&SYSUID=1&LICID=12870>

Licensee: Whitehaven Coal Mining Pty Ltd

Licensee Address: Rocglen Coal Mine, Wean Road, GUNNEDAH NSW 2380

EPL Monitoring Points: See Figure 1 below

Sampling Period: May 2024

Obtained Date: 11th June 2024

Publication Date: 21st June 2024

Table 1 - No Pollutant Limits Apply

EPL ID	Pollutant	Units of Measure	Monitoring Frequency	No. of Samples for the Month	Date(s) Sampled	Date(s) Obtained	Min Value	Mean Value	Median Value	Max or Only Value
4	Particulates-Deposited Matter (BD4)	g/m ² /month	Continuous	1	10/05/2024	30/05/2024	-	-	-	1.2
6	Particulates-Deposited Matter (BD6)	g/m ² /month	Continuous	1	10/05/2024	30/05/2024	-	-	-	0.3
10	PM ₁₀	µg/m ³	Every 6 days	5	5/05/2024 09/05/2024 17/05/2024 23/05/2024 29/05/2024	11/06/2024	1.4	8.42	8.7	15.5
11	Conductivity	µS /cm	Special Frequency 1*	0	-	-	-	-	-	-
	Total organic carbon	mg/L					-	-	-	-
12	Conductivity	µS /cm	Special Frequency 1*	0	-	-	-	-	-	-
	Total organic carbon	mg/L					-	-	-	-
13	TSS	mg/L	Special Frequency 2**(DDCK)	0	-	-	-	-	-	-
	Conductivity	µS/cm					-	-	-	-
	Oil & Grease	mg/L					-	-	-	-
	pH	pH					-	-	-	-



Rocglen Coal Mine- Monthly Monitoring Summary

EPL ID	Pollutant	Units of Measure	Monitoring Frequency	No. of Samples for the Month	Date(s) Sampled	Date(s) Obtained	Min Value	Mean Value	Median Value	Max or Only Value
	Total organic carbon	mg/L					-	-	-	-
14	TSS	mg/L	Special Frequency 2**(UNDC)	0	-	-	-	-	-	-
	Conductivity	µS/cm					-	-	-	-
	Oil & Grease	mg/L					-	-	-	-
	pH	pH					-	-	-	-
	Total organic carbon	mg/L					-	-	-	-
15	TSS	mg/L	Special Frequency 2** (SD7)	1	28/05/24	05/06/24	-	-	-	34
	Conductivity	µS /cm					-	-	-	444
	Oil & Grease	mg/L					-	-	-	<5
	pH	pH					-	-	-	7.7
	Total organic carbon	mg/L					-	-	-	20

Table 2 - Pollutant Limits Apply

EPL ID	Pollutant	Units of Measure	Monitoring Frequency	No. of Samples for the Month	Date(s) Sampled	Date(s) Obtained	Min Value	Max or Only Value	100%ile Limit	Exceedance (Yes/No)	Comments
11	TSS	mg/L	Special Frequency 1*	0	-	-	-	-	-	No	-
	Oil & Grease	mg/L					-	-	-	No	
	pH	pH					-	-	-	No	
12	TSS	mg/L	Special Frequency 1*	0	-	-	-	-	-	No	-
	Oil & Grease	mg/L					-	-	-	No	
	pH	pH					-	-	-	No	

* Special Frequency 1 means the collection of samples as soon as practicable after each discharge commences and in any case not more than 12 hours after each discharge commences.

** Special Frequency 2 means collection of samples quarterly (in the event of flow during the quarter) at a time when there is flow and as soon as practicable after each wet weather discharge from points 11 and 12 commences and in any case not more than 12 hours after each discharge commences.

Rocglen Coal Mine- Monthly Monitoring Summary

Table 3 – Monitoring (Quarterly & Yearly – No Limits apply)

EPL ID	Pollutant	Units of Measure	Monitoring Frequency	No. of Samples for the Month	Date Sampled	Date Obtained	Min Value	Mean Value	Median Value	Max Value/Only Value
16	Aluminium	mg/L	Yearly (Void)	0	-	-	-	-	-	-
	Arsenic	mg/L					-	-	-	-
	Bicarbonate	mg/L					-	-	-	-
	Chloride	mg/L					-	-	-	-
	Iron	mg/L					-	-	-	-
	Manganese	mg/L					-	-	-	-
	Sodium	mg/L					-	-	-	-
16	Conductivity	µS/cm	Quarterly (Void)	1	28/05/24	05/06/24	-	-	-	954
	Oil & Grease	mg/L					-	-	-	<5
	pH	pH					-	-	-	8.98
	TOC	mg/L					-	-	-	5
	TSS	mg/L					-	-	-	53

Figure 1 – EPL 12870 Monitoring Locations



WHITEHAVEN COAL

Rocglen Coal Mine- Monthly Monitoring Summary



Rocglen Coal Mine- Monthly Monitoring Summary

Site Information

EPL No: 12870

EPA Website Link: <http://epa.nsw.gov.au/prpoeoapp/ViewPOEOLicence.aspx?DOCID=40278&SYSUID=1&LICID=12870>

Licensee: Whitehaven Coal Mining Pty Ltd

Licensee Address: Rocglen Coal Mine, Wean Road, GUNNEDAH NSW 2380

EPL Monitoring Points: See Figure 1 below

Sampling Period: June 2024

Obtained Date: 11th June 2024

Publication Date: 25th June 2024

Table 1 - No Pollutant Limits Apply

EPL ID	Pollutant	Units of Measure	Monitoring Frequency	No. of Samples for the Month	Date(s) Sampled	Date(s) Obtained	Min Value	Mean Value	Median Value	Max or Only Value
4	Particulates-Deposited Matter (BD4)	g/m ² /month	Continuous	0	11/06/24	26/06/2024	-	-	-	0.9
6	Particulates-Deposited Matter (BD6)	g/m ² /month	Continuous	0	11/06/2024	26/06/2024	-	-	-	0.2
10	PM ₁₀	µg/m ³	Every 6 days	5	04/06/2024 10/06/2024 16/06/2024 22/06/2024 28/06/2024	11/06/2024	2.8	4.08	3.9	6.1
11	Conductivity	µS /cm	Special Frequency 1*	1	01/06/2024	01/06/2024	-	-	-	402
	Total organic carbon	mg/L					-	-	-	7
12	Conductivity	µS /cm	Special Frequency 1*	0	-	-	-	-	-	-
	Total organic carbon	mg/L					-	-	-	-
13	TSS	mg/L	Special Frequency 2**(DDCK)	0	-	-	-	-	-	-
	Conductivity	µS/cm					-	-	-	-
	Oil & Grease	mg/L					-	-	-	-
	pH	pH					-	-	-	-
	Total organic carbon	mg/L					-	-	-	-



Rocglen Coal Mine- Monthly Monitoring Summary

EPL ID	Pollutant	Units of Measure	Monitoring Frequency	No. of Samples for the Month	Date(s) Sampled	Date(s) Obtained	Min Value	Mean Value	Median Value	Max or Only Value
14	TSS	mg/L	Special Frequency 2**(UNDC)	0	-	-	-	-	-	-
	Conductivity	µS/cm					-	-	-	-
	Oil & Grease	mg/L					-	-	-	-
	pH	pH					-	-	-	-
	Total organic carbon	mg/L					-	-	-	-
15	TSS	mg/L	Special Frequency 2** (SD7)	0			-	-	-	-
	Conductivity	µS /cm					-	-	-	-
	Oil & Grease	mg/L					-	-	-	-
	pH	pH					-	-	-	-
	Total organic carbon	mg/L					-	-	-	-

Table 2 - Pollutant Limits Apply

EPL ID	Pollutant	Units of Measure	Monitoring Frequency	No. of Samples for the Month	Date(s) Sampled	Date(s) Obtained	Min Value	Max or Only Value	100%ile Limit	Exceedance (Yes/No)	Comments
11	TSS	mg/L	Special Frequency 1*	1	01/06/2024	26/06/2024	-	518	50	No	Result of >56.8mm rainfall. No limit on TSS
	Oil & Grease	mg/L					-	< 5	10	No	
	pH	pH					-	7.44	6.5-8.5	No	
12	TSS	mg/L	Special Frequency 1*	0	-	-	-	-	-	No	-
	Oil & Grease	mg/L					-	-	-	No	
	pH	pH					-	-	-	No	

* Special Frequency 1 means the collection of samples as soon as practicable after each discharge commences and, in any case, not more than 12 hours after each discharge commences.

** Special Frequency 2 means collection of samples quarterly (in the event of flow during the quarter) at a time when there is flow and as soon as practicable after each wet weather discharge from points 11 and 12 commences and in any case not more than 12 hours after each discharge commences.

Rocglen Coal Mine- Monthly Monitoring Summary

Table 3 – Monitoring (Quarterly & Yearly – No Limits apply)

EPL ID	Pollutant	Units of Measure	Monitoring Frequency	No. of Samples for the Month	Date Sampled	Date Obtained	Min Value	Mean Value	Median Value	Max Value/Only Value
16	Aluminium	mg/L	Yearly (Void)	1	26/06/2024	04/07/2024	-	-	-	0.32
	Arsenic	mg/L					-	-	-	0.008
	Bicarbonate	mg/L					-	-	-	219
	Chloride	mg/L					-	-	-	105
	Iron	mg/L					-	-	-	0.15
	Manganese	mg/L					-	-	-	0.029
	Sodium	mg/L					-	-	-	146
16	Conductivity	µS/cm	Quarterly (Void)	0	-	-	-	-	-	-
	Oil & Grease	mg/L					-	-	-	-
	pH	pH					-	-	-	-
	TOC	mg/L					-	-	-	-
	TSS	mg/L					-	-	-	-

Figure 1 – EPL 12870 Monitoring Locations



WHITEHAVEN COAL

Rocglen Coal Mine- Monthly Monitoring Summary



Rocglen Coal Mine- Monthly Monitoring Summary

Site Information

EPL No: 12870

EPA Website Link: <http://epa.nsw.gov.au/prpoeoapp/ViewPOEOLicence.aspx?DOCID=40278&SYSUID=1&LICID=12870>

Licensee: Whitehaven Coal Mining Pty Ltd

Licensee Address: Rocglen Coal Mine, Wean Road, GUNNEDAH NSW 2380

EPL Monitoring Points: See Figure 1 below

Sampling Period: July 2024

Obtained Date: 08th August 2024

Publication Date: 19th August 2024

Table 1 - No Pollutant Limits Apply

EPL ID	Pollutant	Units of Measure	Monitoring Frequency	No. of Samples for the Month	Date(s) Sampled	Date(s) Obtained	Min Value	Mean Value	Median Value	Max or Only Value
4	Particulates-Deposited Matter (BD4)	g/m ² /month	Continuous	1	10/07/24	23/07/2024	-	-	-	5.3
6	Particulates-Deposited Matter (BD6)	g/m ² /month	Continuous	1	10/07/2024	23/07/2024	-	-	-	0.3
10	PM ₁₀	µg/m ³	Every 6 days	5	04/07/2024 10/07/2024 16/07/2024 22/07/2024 28/07/2024	08/08/2024	1.6	4.14	3.9	6
11	Conductivity	µS /cm	Special Frequency 1*	0	-	-	-	-	-	-
	Total organic carbon	mg/L					-	-	-	-
12	Conductivity	µS /cm	Special Frequency 1*	0	-	-	-	-	-	-
	Total organic carbon	mg/L					-	-	-	-
13	TSS	mg/L	Special Frequency 2**(DDCK)	0	-	-	-	-	-	-
	Conductivity	µS/cm					-	-	-	-
	Oil & Grease	mg/L					-	-	-	-
	pH	pH					-	-	-	-
	Total organic carbon	mg/L					-	-	-	-



Rocglen Coal Mine- Monthly Monitoring Summary

EPL ID	Pollutant	Units of Measure	Monitoring Frequency	No. of Samples for the Month	Date(s) Sampled	Date(s) Obtained	Min Value	Mean Value	Median Value	Max or Only Value
14	TSS	mg/L	Special Frequency 2**(UNDC)	0	-	-	-	-	-	-
	Conductivity	µS/cm					-	-	-	-
	Oil & Grease	mg/L					-	-	-	-
	pH	pH					-	-	-	-
	Total organic carbon	mg/L					-	-	-	-
15	TSS	mg/L	Special Frequency 2** (SD7)	0			-	-	-	-
	Conductivity	µS /cm					-	-	-	-
	Oil & Grease	mg/L					-	-	-	-
	pH	pH					-	-	-	-
	Total organic carbon	mg/L					-	-	-	-

Table 2 - Pollutant Limits Apply

EPL ID	Pollutant	Units of Measure	Monitoring Frequency	No. of Samples for the Month	Date(s) Sampled	Date(s) Obtained	Min Value	Max or Only Value	100%ile Limit	Exceedance (Yes/No)	Comments
11	TSS	mg/L	Special Frequency 1*	0	-	-	-	-	-	No	-
	Oil & Grease	mg/L					-	-	-	No	
	pH	pH					-	-	-	No	
12	TSS	mg/L	Special Frequency 1*	0	-	-	-	-	-	No	-
	Oil & Grease	mg/L					-	-	-	No	
	pH	pH					-	-	-	No	

* Special Frequency 1 means the collection of samples as soon as practicable after each discharge commences and in any case not more than 12 hours after each discharge commences.

** Special Frequency 2 means collection of samples quarterly (in the event of flow during the quarter) at a time when there is flow and as soon as practicable after each wet weather discharge from points 11 and 12 commences and in any case not more than 12 hours after each discharge commences.

Rocglen Coal Mine- Monthly Monitoring Summary

Table 3 – Monitoring (Quarterly & Yearly – No Limits apply)

EPL ID	Pollutant	Units of Measure	Monitoring Frequency	No. of Samples for the Month	Date Sampled	Date Obtained	Min Value	Mean Value	Median Value	Max Value/Only Value
16	Aluminium	mg/L	Yearly (Void)	0	-	-	-	-	-	-
	Arsenic	mg/L					-	-	-	-
	Bicarbonate	mg/L					-	-	-	-
	Chloride	mg/L					-	-	-	-
	Iron	mg/L					-	-	-	-
	Manganese	mg/L					-	-	-	-
	Sodium	mg/L					-	-	-	-
16	Conductivity	µS/cm	Quarterly (Void)	0	-	-	-	-	-	-
	Oil & Grease	mg/L					-	-	-	-
	pH	pH					-	-	-	-
	TOC	mg/L					-	-	-	-
	TSS	mg/L					-	-	-	-

Figure 1 – EPL 12870 Monitoring Locations



WHITEHAVEN COAL

Rocglen Coal Mine- Monthly Monitoring Summary



Rocglen Coal Mine- Monthly Monitoring Summary

Site Information

EPL No: 12870

EPA Website Link: <http://epa.nsw.gov.au/prpoeoapp/ViewPOEOLicence.aspx?DOCID=40278&SYSUID=1&LICID=12870>

Licensee: Whitehaven Coal Mining Pty Ltd

Licensee Address: Rocglen Coal Mine, Wean Road, GUNNEDAH NSW 2380

EPL Monitoring Points: See Figure 1 below

Sampling Period: August 2024

Obtained Date: 10th September 2024

Publication Date: 19th September 2024

Table 1 - No Pollutant Limits Apply

EPL ID	Pollutant	Units of Measure	Monitoring Frequency	No. of Samples for the Month	Date(s) Sampled	Date(s) Obtained	Min Value	Mean Value	Median Value	Max or Only Value
4	Particulates-Deposited Matter (BD4)	g/m ² /month	Continuous	1	08/08/24	30/08/2024	-	-	-	1.2
6	Particulates-Deposited Matter (BD6)	g/m ² /month	Continuous	1	08/08/2024	30/08/2024	-	-	-	0.9
10	PM ₁₀	µg/m ³	Every 6 days	4	07/08/2024 15/08/2024 21/08/2024 27/08/2024	10/09/2024	1.5	8.6	10.25	17.4
11	Conductivity	µS /cm	Special Frequency 1*	1	06/08/2024	15/08/2024	-	-	-	379
	Total organic carbon	mg/L					-	-	-	5
12	Conductivity	µS /cm	Special Frequency 1*	0	-	-	-	-	-	-
	Total organic carbon	mg/L					-	-	-	-
13	TSS	mg/L	Special Frequency 2**(DDCK)	0	-	-	-	-	-	-
	Conductivity	µS/cm					-	-	-	-
	Oil & Grease	mg/L					-	-	-	-
	pH	pH					-	-	-	-
	Total organic carbon	mg/L					-	-	-	-



Rocglen Coal Mine- Monthly Monitoring Summary

EPL ID	Pollutant	Units of Measure	Monitoring Frequency	No. of Samples for the Month	Date(s) Sampled	Date(s) Obtained	Min Value	Mean Value	Median Value	Max or Only Value
14	TSS	mg/L	Special Frequency 2**(UNDC)	1	06/08/2024	15/08/2024	-	-	-	117
	Conductivity	µS/cm					-	-	-	118
	Oil & Grease	mg/L					-	-	-	5
	pH	pH					-	-	-	7.41
	Total organic carbon	mg/L					-	-	-	13
15	TSS	mg/L	Special Frequency 2** (SD7)	0			-	-	-	-
	Conductivity	µS /cm					-	-	-	-
	Oil & Grease	mg/L					-	-	-	-
	pH	pH					-	-	-	-
	Total organic carbon	mg/L					-	-	-	-

Table 2 - Pollutant Limits Apply

EPL ID	Pollutant	Units of Measure	Monitoring Frequency	No. of Samples for the Month	Date(s) Sampled	Date(s) Obtained	Min Value	Max or Only Value	100%ile Limit	Exceedance (Yes/No)	Comments
11	TSS	mg/L	Special Frequency 1*	1	06/08/2024	15/08/2024	-	102	-	No	Wet weather discharge
	Oil & Grease	mg/L					-	< 5	-	No	
	pH	pH					-	7.75	-	No	
12	TSS	mg/L	Special Frequency 1*	0	-	-	-	-	-	No	-
	Oil & Grease	mg/L					-	-	-	No	
	pH	pH					-	-	-	No	

* Special Frequency 1 means the collection of samples as soon as practicable after each discharge commences and in any case not more than 12 hours after each discharge commences.

** Special Frequency 2 means collection of samples quarterly (in the event of flow during the quarter) at a time when there is flow and as soon as practicable after each wet weather discharge from points 11 and 12 commences and in any case not more than 12 hours after each discharge commences.

Rocglen Coal Mine- Monthly Monitoring Summary

Table 3 – Monitoring (Quarterly & Yearly – No Limits apply)

EPL ID	Pollutant	Units of Measure	Monitoring Frequency	No. of Samples for the Month	Date Sampled	Date Obtained	Min Value	Mean Value	Median Value	Max Value/Only Value
16	Aluminium	mg/L	Yearly (Void)	0	-	-	-	-	-	-
	Arsenic	mg/L					-	-	-	-
	Bicarbonate	mg/L					-	-	-	-
	Chloride	mg/L					-	-	-	-
	Iron	mg/L					-	-	-	-
	Manganese	mg/L					-	-	-	-
	Sodium	mg/L					-	-	-	-
16	Conductivity	µS/cm	Quarterly (Void)	1	13/08/2024	21/08/2024	-	-	-	600
	Oil & Grease	mg/L					-	-	-	< 5
	pH	pH					-	-	-	8.48
	TOC	mg/L					-	-	-	4
	TSS	mg/L					-	-	-	16

Figure 1 – EPL 12870 Monitoring Locations



WHITEHAVEN COAL

Rocglen Coal Mine- Monthly Monitoring Summary





Rocglen Coal Mine- Monthly Monitoring Summary

Site Information

EPL No: 12870

EPA Website Link: <http://epa.nsw.gov.au/prpoeoapp/ViewPOEOLicence.aspx?DOCID=40278&SYSUID=1&LICID=12870>

Licensee: Whitehaven Coal Mining Pty Ltd

Licensee Address: Rocglen Coal Mine, Wean Road, GUNNEDAH NSW 2380

EPL Monitoring Points: See Figure 1 below

Sampling Period: September 2024

Obtained Date: 09th October 2024

Publication Date: 15th October 2024

Table 1 - No Pollutant Limits Apply

EPL ID	Pollutant	Units of Measure	Monitoring Frequency	No. of Samples for the Month	Date(s) Sampled	Date(s) Obtained	Min Value	Mean Value	Median Value	Max or Only Value
4	Particulates-Deposited Matter (BD4)	g/m ² /month	Continuous	1	05/09/2024	23/09/2024	-	-	-	0.7
6	Particulates-Deposited Matter (BD6)	g/m ² /month	Continuous	1	05/09/2024	23/09/2024	-	-	-	1.1
10	PM ₁₀	µg/m ³	Every 6 days	5	02/09/2024 08/09/2024 14/09/2024 20/09/2024 26/09/2024	09/10/2024	2.9	10.12	10.6	16.2
11	Conductivity	µS /cm	Special Frequency 1*	0		-	-	-	-	-
	Total organic carbon	mg/L					-	-	-	-
12	Conductivity	µS /cm	Special Frequency 1*	0	-	-	-	-	-	-
	Total organic carbon	mg/L					-	-	-	-
13	TSS	mg/L	Special Frequency 2**(DDCK)	0	-	-	-	-	-	-
	Conductivity	µS/cm					-	-	-	-
	Oil & Grease	mg/L					-	-	-	-
	pH	pH					-	-	-	-
	Total organic carbon	mg/L					-	-	-	-



Rocglen Coal Mine- Monthly Monitoring Summary

EPL ID	Pollutant	Units of Measure	Monitoring Frequency	No. of Samples for the Month	Date(s) Sampled	Date(s) Obtained	Min Value	Mean Value	Median Value	Max or Only Value
14	TSS	mg/L	Special Frequency 2**(UNDC)	0	-	-	-	-	-	-
	Conductivity	µS/cm					-	-	-	-
	Oil & Grease	mg/L					-	-	-	-
	pH	pH					-	-	-	-
	Total organic carbon	mg/L					-	-	-	-
15	TSS	mg/L	Special Frequency 2**(SD7)	0	-	-	-	-	-	-
	Conductivity	µS /cm					-	-	-	-
	Oil & Grease	mg/L					-	-	-	-
	pH	pH					-	-	-	-
	Total organic carbon	mg/L					-	-	-	-

Table 2 - Pollutant Limits Apply

EPL ID	Pollutant	Units of Measure	Monitoring Frequency	No. of Samples for the Month	Date(s) Sampled	Date(s) Obtained	Min Value	Max or Only Value	100%ile Limit	Exceedance (Yes/No)	Comments
11	TSS	mg/L	Special Frequency 1*	0	-	-	-	-	-	No	-
	Oil & Grease	mg/L					-	-	-	No	
	pH	pH					-	-	-	No	
12	TSS	mg/L	Special Frequency 1*	0	-	-	-	-	-	No	-
	Oil & Grease	mg/L					-	-	-	No	
	pH	pH					-	-	-	No	

* Special Frequency 1 means the collection of samples as soon as practicable after each discharge commences and in any case not more than 12 hours after each discharge commences.

** Special Frequency 2 means collection of samples quarterly (in the event of flow during the quarter) at a time when there is flow and as soon as practicable after each wet weather discharge from points 11 and 12 commences and in any case not more than 12 hours after each discharge commences.

Rocglen Coal Mine- Monthly Monitoring Summary

Table 3 – Monitoring (Quarterly & Yearly – No Limits apply)

EPL ID	Pollutant	Units of Measure	Monitoring Frequency	No. of Samples for the Month	Date Sampled	Date Obtained	Min Value	Mean Value	Median Value	Max Value/Only Value
16	Aluminium	mg/L	Yearly (Void)	-	-	-	-	-	-	-
	Arsenic	mg/L					-	-	-	-
	Bicarbonate	mg/L					-	-	-	-
	Chloride	mg/L					-	-	-	-
	Iron	mg/L					-	-	-	-
	Manganese	mg/L					-	-	-	-
	Sodium	mg/L					-	-	-	-
16	Conductivity	µS/cm	Quarterly (Void)	-	-	-	-	-	-	-
	Oil & Grease	mg/L					-	-	-	-
	pH	pH					-	-	-	-
	TOC	mg/L					-	-	-	-
	TSS	mg/L					-	-	-	-



WHITEHAVEN COAL

Rocglen Coal Mine- Monthly Monitoring Summary

Figure 1 – EPL 12870 Monitoring Locations



Rocglen Coal Mine- Monthly Monitoring Summary

Site Information

EPL No: 12870

EPA Website Link: <http://epa.nsw.gov.au/prpoeoapp/ViewPOEOLicence.aspx?DOCID=40278&SYSUID=1&LICID=12870>

Licensee: Whitehaven Coal Mining Pty Ltd

Licensee Address: Rocglen Coal Mine, Wean Road, GUNNEDAH NSW 2380

EPL Monitoring Points: See Figure 1 below

Sampling Period: October 2024

Obtained Date: 7th November 2024

Publication Date: 12th November 2024

Table 1 - No Pollutant Limits Apply

EPL ID	Pollutant	Units of Measure	Monitoring Frequency	No. of Samples for the Month	Date(s) Sampled	Date(s) Obtained	Min Value	Mean Value	Median Value	Max or Only Value
4	Particulates-Deposited Matter (BD4)	g/m ² /month	Continuous	1	03/10/2024	23/10/2024	-	-	-	0.3
6	Particulates-Deposited Matter (BD6)	g/m ² /month	Continuous	1	03/10/2024	23/10/2024	-	-	-	0.5
10	PM ₁₀	µg/m ³	Every 6 days	5	02/10/2024 08/10/2024 14/10/2024 20/10/2024 26/10/2024	07/11/2024	5.0	9.02	8.0	13.6
11	Conductivity	µS /cm	Special Frequency 1*	0		-	-	-	-	-
	Total organic carbon	mg/L					-	-	-	-
12	Conductivity	µS /cm	Special Frequency 1*	0	-	-	-	-	-	-
	Total organic carbon	mg/L					-	-	-	-
13	TSS	mg/L	Special Frequency 2**(DDCK)	0	-	-	-	-	-	-
	Conductivity	µS/cm					-	-	-	-
	Oil & Grease	mg/L					-	-	-	-
	pH	pH					-	-	-	-
	Total organic carbon	mg/L					-	-	-	-



Rocglen Coal Mine- Monthly Monitoring Summary

EPL ID	Pollutant	Units of Measure	Monitoring Frequency	No. of Samples for the Month	Date(s) Sampled	Date(s) Obtained	Min Value	Mean Value	Median Value	Max or Only Value
14	TSS	mg/L	Special Frequency 2**(UNDC)	0	-	-	-	-	-	-
	Conductivity	µS/cm					-	-	-	-
	Oil & Grease	mg/L					-	-	-	-
	pH	pH					-	-	-	-
	Total organic carbon	mg/L					-	-	-	-
15	TSS	mg/L	Special Frequency 2**(SD7)	0	-	-	-	-	-	-
	Conductivity	µS /cm					-	-	-	-
	Oil & Grease	mg/L					-	-	-	-
	pH	pH					-	-	-	-
	Total organic carbon	mg/L					-	-	-	-

Table 2 - Pollutant Limits Apply

EPL ID	Pollutant	Units of Measure	Monitoring Frequency	No. of Samples for the Month	Date(s) Sampled	Date(s) Obtained	Min Value	Max or Only Value	100%ile Limit	Exceedance (Yes/No)	Comments
11	TSS	mg/L	Special Frequency 1*	0	-	-	-	-	-	No	-
	Oil & Grease	mg/L					-	-	-	No	
	pH	pH					-	-	-	No	
12	TSS	mg/L	Special Frequency 1*	0	-	-	-	-	-	No	-
	Oil & Grease	mg/L					-	-	-	No	
	pH	pH					-	-	-	No	

* Special Frequency 1 means the collection of samples as soon as practicable after each discharge commences and in any case not more than 12 hours after each discharge commences.

** Special Frequency 2 means collection of samples quarterly (in the event of flow during the quarter) at a time when there is flow and as soon as practicable after each wet weather discharge from points 11 and 12 commences and in any case not more than 12 hours after each discharge commences.

Rocglen Coal Mine- Monthly Monitoring Summary

Table 3 – Monitoring (Quarterly & Yearly – No Limits apply)

EPL ID	Pollutant	Units of Measure	Monitoring Frequency	No. of Samples for the Month	Date Sampled	Date Obtained	Min Value	Mean Value	Median Value	Max Value/Only Value
16	Aluminium	mg/L	Yearly (Void)	-	-	-	-	-	-	-
	Arsenic	mg/L					-	-	-	-
	Bicarbonate	mg/L					-	-	-	-
	Chloride	mg/L					-	-	-	-
	Iron	mg/L					-	-	-	-
	Manganese	mg/L					-	-	-	-
	Sodium	mg/L					-	-	-	-
16	Conductivity	µS/cm	Quarterly (Void)	-	-	-	-	-	-	-
	Oil & Grease	mg/L					-	-	-	-
	pH	pH					-	-	-	-
	TOC	mg/L					-	-	-	-
	TSS	mg/L					-	-	-	-

Figure 1 – EPL 12870 Monitoring Locations



WHITEHAVEN COAL

Rocglen Coal Mine- Monthly Monitoring Summary



Rocglen Coal Mine- Monthly Monitoring Summary

Site Information

EPL No: 12870

EPA Website Link: <http://epa.nsw.gov.au/prpoeoapp/ViewPOEOLicence.aspx?DOCID=40278&SYSUID=1&LICID=12870>

Licensee: Whitehaven Coal Mining Pty Ltd

Licensee Address: Rocglen Coal Mine, Wean Road, GUNNEDAH NSW 2380

EPL Monitoring Points: See Figure 1 below

Sampling Period: November 2024

Obtained Date: 23rd December 2024

Publication Date: 23rd December 2024

Table 1 - No Pollutant Limits Apply

EPL ID	Pollutant	Units of Measure	Monitoring Frequency	No. of Samples for the Month	Date(s) Sampled	Date(s) Obtained	Min Value	Mean Value	Median Value	Max or Only Value
4	Particulates-Deposited Matter (BD4)	g/m ² /month	Continuous	1	4/11/2024	26/11/2024	-	-	-	0.9
6	Particulates-Deposited Matter (BD6)	g/m ² /month	Continuous	1	4/11/2024	26/11/2024	-	-	-	0.6
10	PM ₁₀	µg/m ³	Every 6 days	5	01/11/2024 07/11/2024 13/11/2024 19/11/2024 25/11/2024	09/12/2024	9.9	17.6	15.9	29.5
11	Conductivity	µS /cm	Special Frequency 1*	0		-	-	-	-	-
	Total organic carbon	mg/L					-	-	-	-
12	Conductivity	µS /cm	Special Frequency 1*	0	-	-	-	-	-	-
	Total organic carbon	mg/L					-	-	-	-
13	TSS	mg/L	Special Frequency 2**(DDCK)	0	-	-	-	-	-	-
	Conductivity	µS/cm					-	-	-	-
	Oil & Grease	mg/L					-	-	-	-
	pH	pH					-	-	-	-
	Total organic carbon	mg/L					-	-	-	-



Rocglen Coal Mine- Monthly Monitoring Summary

EPL ID	Pollutant	Units of Measure	Monitoring Frequency	No. of Samples for the Month	Date(s) Sampled	Date(s) Obtained	Min Value	Mean Value	Median Value	Max or Only Value
14	TSS	mg/L	Special Frequency 2**(UNDC)	0	-	-	-	-	-	-
	Conductivity	µS/cm					-	-	-	-
	Oil & Grease	mg/L					-	-	-	-
	pH	pH					-	-	-	-
	Total organic carbon	mg/L					-	-	-	-
15	TSS	mg/L	Special Frequency 2**(SD7)	0	-	-	-	-	-	-
	Conductivity	µS /cm					-	-	-	-
	Oil & Grease	mg/L					-	-	-	-
	pH	pH					-	-	-	-
	Total organic carbon	mg/L					-	-	-	-

Table 2 - Pollutant Limits Apply

EPL ID	Pollutant	Units of Measure	Monitoring Frequency	No. of Samples for the Month	Date(s) Sampled	Date(s) Obtained	Min Value	Max or Only Value	100%ile Limit	Exceedance (Yes/No)	Comments
11	TSS	mg/L	Special Frequency 1*	0	-	-	-	-	-	No	-
	Oil & Grease	mg/L					-	-	-	No	
	pH	pH					-	-	-	No	
12	TSS	mg/L	Special Frequency 1*	0	-	-	-	-	-	No	-
	Oil & Grease	mg/L					-	-	-	No	
	pH	pH					-	-	-	No	

* Special Frequency 1 means the collection of samples as soon as practicable after each discharge commences and in any case not more than 12 hours after each discharge commences.

** Special Frequency 2 means collection of samples quarterly (in the event of flow during the quarter) at a time when there is flow and as soon as practicable after each wet weather discharge from points 11 and 12 commences and in any case not more than 12 hours after each discharge commences.



Rocglen Coal Mine- Monthly Monitoring Summary

Table 3 – Monitoring (Quarterly & Yearly – No Limits apply)

EPL ID	Pollutant	Units of Measure	Monitoring Frequency	No. of Samples for the Month	Date Sampled	Date Obtained	Min Value	Mean Value	Median Value	Max Value/Only Value
16	Aluminium	mg/L	Yearly (Void)	-	-	-	-	-	-	-
	Arsenic	mg/L					-	-	-	-
	Bicarbonate	mg/L					-	-	-	-
	Chloride	mg/L					-	-	-	-
	Iron	mg/L					-	-	-	-
	Manganese	mg/L					-	-	-	-
	Sodium	mg/L					-	-	-	-
16	Conductivity	µS/cm	Quarterly (Void)	1	20/11/2024	23/12/2024	-	-	-	1160
	Oil & Grease	mg/L					-	-	-	<5
	pH	pH					-	-	-	9.03
	TOC	mg/L					-	-	-	13
	TSS	mg/L					-	-	-	*

*Laboratory reporting error, result to be added in due course



WHITEHAVEN COAL

Rocglen Coal Mine- Monthly Monitoring Summary

Figure 1 – EPL 12870 Monitoring Locations



Rocglen Coal Mine- Monthly Monitoring Summary

Site Information

EPL No: 12870

EPA Website Link: <http://epa.nsw.gov.au/prpoeoapp/ViewPOEOLicence.aspx?DOCID=40278&SYSUID=1&LICID=12870>

Licensee: Whitehaven Coal Mining Pty Ltd

Licensee Address: Rocglen Coal Mine, Wean Road, GUNNEDAH NSW 2380

EPL Monitoring Points: See Figure 1 below

Sampling Period: December 2024

Obtained Date: 7th January 2025

Publication Date: 13th January 2025

Table 1 - No Pollutant Limits Apply

EPL ID	Pollutant	Units of Measure	Monitoring Frequency	No. of Samples for the Month	Date(s) Sampled	Date(s) Obtained	Min Value	Mean Value	Median Value	Max or Only Value
4	Particulates-Deposited Matter (BD4)	g/m ² /month	Continuous	1	6/12/2024	19/12/2024	-	-	-	1.5
6	Particulates-Deposited Matter (BD6)	g/m ² /month	Continuous	1	6/12/2024	19/12/2024	-	-	-	0.9
10	PM ₁₀	µg/m ³	Every 6 days	5	01/12/2024 07/12/2024 13/12/2024 19/12/2024 25/12/2024	07/01/2025	8.8	14.4	13	18.9
11	Conductivity	µS /cm	Special Frequency 1*	1	2/12/2024	12/12/2024	-	-	-	452
	Total organic carbon	mg/L					-	-	-	6
12	Conductivity	µS /cm	Special Frequency 1*	0	-	-	-	-	-	-
	Total organic carbon	mg/L					-	-	-	-
13	TSS	mg/L	Special Frequency 2**(DDCK)	0	-	-	-	-	-	-
	Conductivity	µS/cm					-	-	-	-
	Oil & Grease	mg/L					-	-	-	-
	pH	pH					-	-	-	-
	Total organic carbon	mg/L					-	-	-	-



Rocglen Coal Mine- Monthly Monitoring Summary

EPL ID	Pollutant	Units of Measure	Monitoring Frequency	No. of Samples for the Month	Date(s) Sampled	Date(s) Obtained	Min Value	Mean Value	Median Value	Max or Only Value
14	TSS	mg/L	Special Frequency 2**(UNDC)	0	-	-	-	-	-	-
	Conductivity	µS/cm					-	-	-	-
	Oil & Grease	mg/L					-	-	-	-
	pH	pH					-	-	-	-
	Total organic carbon	mg/L					-	-	-	-
15	TSS	mg/L	Special Frequency 2** (SD7)	0	-	-	-	-	-	-
	Conductivity	µS /cm					-	-	-	-
	Oil & Grease	mg/L					-	-	-	-
	pH	pH					-	-	-	-
	Total organic carbon	mg/L					-	-	-	-

Table 2 - Pollutant Limits Apply

EPL ID	Pollutant	Units of Measure	Monitoring Frequency	No. of Samples for the Month	Date(s) Sampled	Date(s) Obtained	Min Value	Max or Only Value	100%ile Limit	Exceedance (Yes/No)	Comments
11	TSS	mg/L	Special Frequency 1*	1	2/12/2024	12/12/2024	-	54	-	No	Wet weather discharge (56.8mm)
	Oil & Grease	mg/L					-	<5	-	No	
	pH	pH					-	8.33	-	No	
12	TSS	mg/L	Special Frequency 1*	0	-	-	-	-	-	No	-
	Oil & Grease	mg/L					-	-	-	No	
	pH	pH					-	-	-	No	

* Special Frequency 1 means the collection of samples as soon as practicable after each discharge commences and in any case not more than 12 hours after each discharge commences.

** Special Frequency 2 means collection of samples quarterly (in the event of flow during the quarter) at a time when there is flow and as soon as practicable after each wet weather discharge from points 11 and 12 commences and in any case not more than 12 hours after each discharge commences.



Rocglen Coal Mine- Monthly Monitoring Summary

Table 3 – Monitoring (Quarterly & Yearly – No Limits apply)

EPL ID	Pollutant	Units of Measure	Monitoring Frequency	No. of Samples for the Month	Date Sampled	Date Obtained	Min Value	Mean Value	Median Value	Max Value/Only Value
16	Aluminium	mg/L	Yearly (Void)	-	-	-	-	-	-	-
	Arsenic	mg/L					-	-	-	-
	Bicarbonate	mg/L					-	-	-	-
	Chloride	mg/L					-	-	-	-
	Iron	mg/L					-	-	-	-
	Manganese	mg/L					-	-	-	-
	Sodium	mg/L					-	-	-	-
16	Conductivity	µS/cm	Quarterly (Void)	1	24/12/2024	06/01/2025	-	-	-	*
	Oil & Grease	mg/L					-	-	-	*
	pH	pH					-	-	-	*
	TOC	mg/L					-	-	-	*
	TSS	mg/L					-	-	-	232

*As reported in EPL report - November, 2024



WHITEHAVEN COAL

Rocglen Coal Mine- Monthly Monitoring Summary

Figure 1 – EPL 12870 Monitoring Locations





Rocglan Coal Mine- Monthly Monitoring Summary

EPL MONTHLY MONITORING REPORTS

2024 CORRECTION LOG

Month of EPL Report	Date of Original Publishing	Date of Correction	Date of Republishing	Correction/s made
November 2024	23 rd December 2024	19 th May 2025	19 th May 2025	<ul style="list-style-type: none">Remove sample data for EPL ID 11
December 2024	13 th January 2025	19 th May 2025	19 th May 2025	<ul style="list-style-type: none">Added sample data for EPL ID 11